

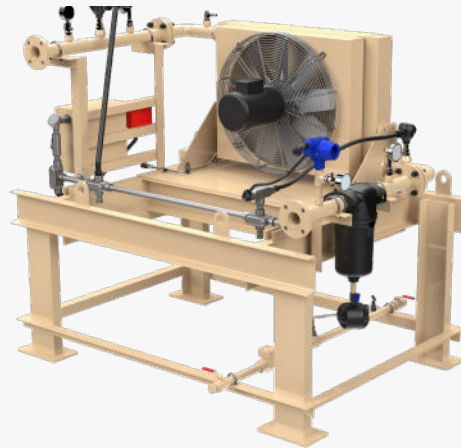


# AIR-COOLED HEAT EXCHANGERS

## Cooling for Natural Gas & Vapor Streams

### Fin-fan Cooler Features:

- For use in controlling gas temperature during processing
- Tailored specifically for EcoVapor’s catalytic O2 removal units (“ZerO2”)
- Ease of service
- Choice of instrumentation available
- Area Classification: Meets C1D2 Groups C&D



Model Shown: FC1800H

|                    | FC525                | FC650                | FC850                | FC1800               |
|--------------------|----------------------|----------------------|----------------------|----------------------|
| MOTOR              | 1 hp                 | 2 hp                 | 2 hp                 | 7.5 hp               |
| POWER REQUIREMENTS | 480V/3ph/60hz, 1.0 A | 480V/3ph/60hz, 3.1 A | 480V/3ph/60hz, 3.1 A | 480V/3ph/60hz, 9.6 A |
| NOMINAL FLOW RATE  | 250 - 525 MSCFD      | 400 - 650 MSCFD      | 600 - 850 MSCFD      | 900 - 1,800 MSCFD    |
| MAWP               | 232 psi @ 250 °F     | 232 psi @ 250 °F     | 232 psi @ 250 °F     | 232 psi @ 250 °F     |
| PROCESS CONNECTION | 2" 150#              | 2" 150#              | 2" 150#              | 2" 150#              |

Each model has the option for standard instrumentation (“L” models, for example, FC850L) and additional instrumentation (“H” models, FC850H).

| Standard Instrumentation (“L” models)                 | Additional Instrumentation (“H” models) |
|---|---|
| Fan cooler  | Inlet temperature transmitter           |
| Water separator & automatic drain                     | Discharge pressure transmitter          |
| Discharge temperature transmitter                     | Vibration switch                        |
| Isolation butterfly valves on both process conditions | Electrical junction box & Turck cable   |

|                    | FC525   | FC650     | FC850     | FC1800    |
|--------------------|---------|-----------|-----------|-----------|
| APPROXIMATE WEIGHT | 850 lbs | 1,050 lbs | 1,050 lbs | 1,200 lbs |
| A                  | 3.125"  | 3.125"    | 3.125"    | 3.125"    |
| B                  | 52.25"  | 56.375"   | 56.375"   | 61.875"   |
| C                  | 34.375" | 35.625"   | 35.625"   | 42.25"    |
| D                  | 50.625" | 58"       | 58"       | 64.375"   |
| E                  | 60.125" | 60.5"     | 60.5"     | 70.25"    |
| F                  | 60"     | 68"       | 68"       | 72"       |
| G                  | 48"     | 48"       | 48"       | 48"       |
| H                  | 50"     | 58"       | 58"       | 62"       |
| J                  | 39.875" | 39.875"   | 39.875"   | 39.875"   |



**Corporate Office**

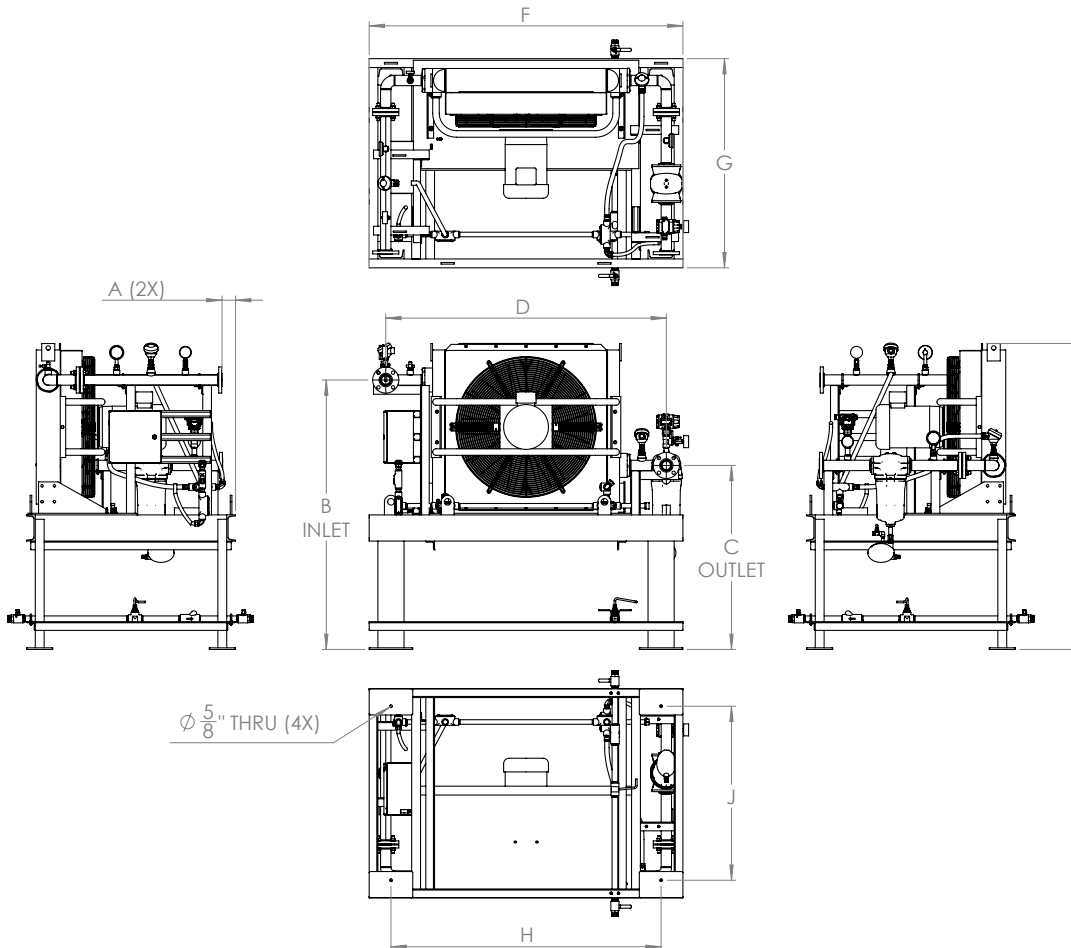
1442 Delgany St. Suite 100  
Denver, CO 80202

**Field Offices**

1804 Cherry Ave.  
Greeley, CO 80631

915 Goode St.  
Midland, TX 79701

5072 Owan Industrial Park Dr.  
Williston, ND 58801



info@EcoVaporRS.com

1-844-No-Flare  
(844.663.5273)