

# ECOFORCE

## Gas Movement Control for Conventional and Tankless Facilities

EcoForce allows operators at existing locations to move vapor from storage tanks, regardless of the application. Existing VRT, surge vessel, and compression assets can be used with the EcoForce skid supplying the high-Btu vapor to the VRU suction inlet.

- Provides gas control/movement ability from existing low-pressure tanks or surge vessels
- No additional compression required – utilizes existing compression assets
- VFD allows for variable pressure to VRU suction
- Recycle / makeup capability maintains gas blanket on tanks
- Competitive purchase and operating cost
- Standard units can handle up to 25 ppmv H<sub>2</sub>S, with spikes up to 150 ppmv



### Options

- 2% and up H<sub>2</sub>S service
- High acid gases and other chemical applications

## EcoForce Specifications

	EcoForce 90	EcoForce 450	EcoForce 900
Flow Capacity (Mscfd)	10 – 90	100 – 450	200 – 900
Typical Pressure Differential (psig)	4 – 12	4 – 15	4 – 15
Max Pressure & Temperature	25 psig / 315 °F	25 psig / 320 °F	25 psig / 340 °F
Power Supply	480V/3ph/60Hz, 6 FLA	480V/3ph/60Hz, 30 FLA	480V/3ph/60Hz, 60 FLA
Motor Size	5 hp	25 hp	50 hp
Inlet / Outlet	2" CL150# RF	4" CL150# RF	6" CL150# RF
Make-up Gas	1" FNPT	1" FNPT	1" FNPT

**Corporate Office**

1422 Delgany St. Suite 100  
Denver, CO 80202

**Field Offices**

1804 Cherry Ave.  
Greeley, CO 80631

915 Goode St.

Midland, TX 79701

5072 Owan Industrial Park Dr.

Williston, ND 58801

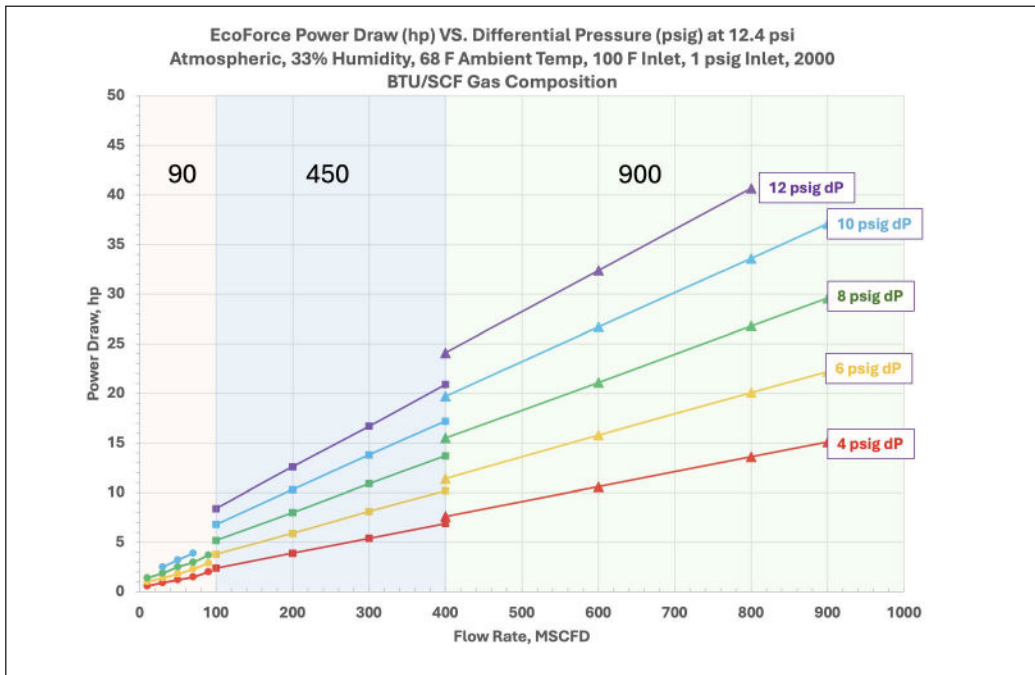
3200 US HWY 40

Roosevelt, UT 84066

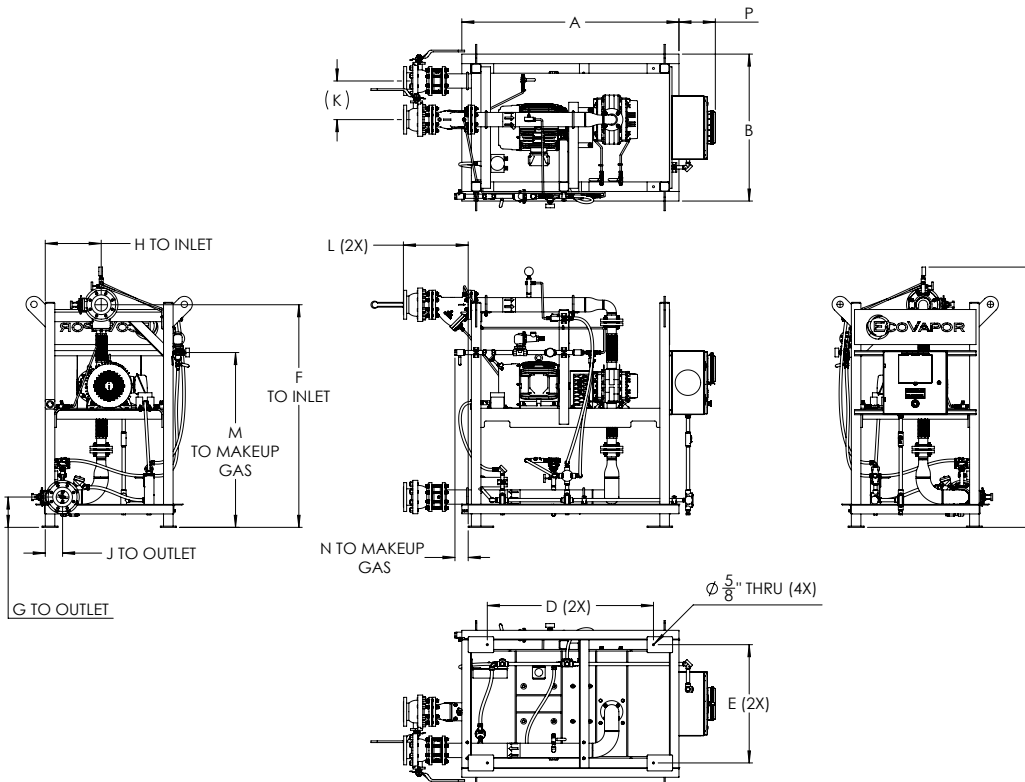
info@EcoVaporRS.com

1-844-No-Flare

(844.663.5273)



Performance can vary with gas composition and environmental conditions.



	A	B	C	D	E	F	G	H	J	K	L	M	N	P	Approximate Weight
EcoForce 90	54"	34.5"	64"	42"	28.5"	53.5"	16.25"	15"	4.5"	10.5"	18"	55"	4.25"	11.5"	800 lbs
EcoForce 450	68.25"	46.25"	81.5"	52.25"	37.25"	70"	9.5"	17.5"	5.5"	12.25"	20"	55"	4.25"	11.5"	2,000 lbs
EcoForce 900	84"	60"	112"	68"	50"	90"	16"	34"	9"	18.25"	24"	55"	4.25"	11.5"	3,400 lbs